

SDR 96/2009

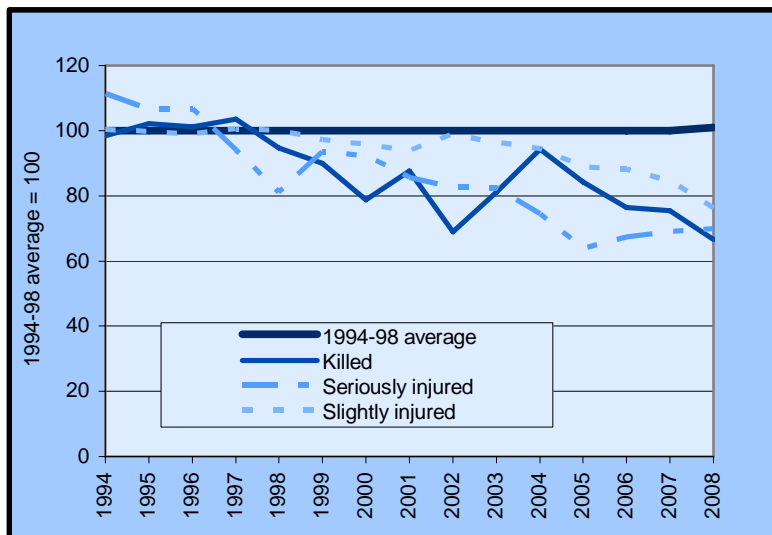
25 June 2009

## Road Casualties in Wales, 2008

The latest road accident and casualty figures for Wales for 2008 show that:

- During 2008 there were **7,783 road accidents** involving personal injury recorded by the police in Wales, 556 (7 per cent) fewer than in 2007.
- These accidents resulted in **11,185 casualties**, 1,084 (9 per cent) fewer than in 2007. Within this total:
  - ⇒ **142** (people were **killed** on Welsh roads in 2008, 19 (12 per cent) fewer than in 2007;
  - ⇒ **1,253** people were **seriously injured** in 2008, 15 (1 per cent) more than in 2007;
  - ⇒ **9,790** people were **slightly injured**, a decrease of 1,080 (10 per cent) compared to the previous year.

**Figure 1: Index of casualties by severity**



In 2000 new targets for 2010 were introduced. They are based on the average for 1994-98.

Target 1: A 40 per cent reduction in the number of killed or seriously injured casualties.

Target 2: A 50 per cent reduction in the number of children killed or seriously injured.

Target 3: A 10 per cent reduction in the slight casualty rate, expressed as the number of people slightly injured per 100 million vehicle kilometres.

**By 2008:**

- ⇒ The number of people **killed or seriously injured** was 31 per cent lower than the average for 1994-98 (Target 1);
- ⇒ The number of **children killed or seriously injured** was 60 per cent lower than the average for 1994-98 (Target 2);
- ⇒ 2007 road traffic data for target 3 are not yet available. However, there was an estimated reduction of 37 per cent in the rate (using 2006 traffic volume data) in the number of people **slightly injured** during 2008 per 100 million vehicle kilometres compared to the average for 1994-98 (Target 3).

**Contact:** Tel: 029 2082 5085 E-mail: stats.transport@wales.gsi.gov.uk

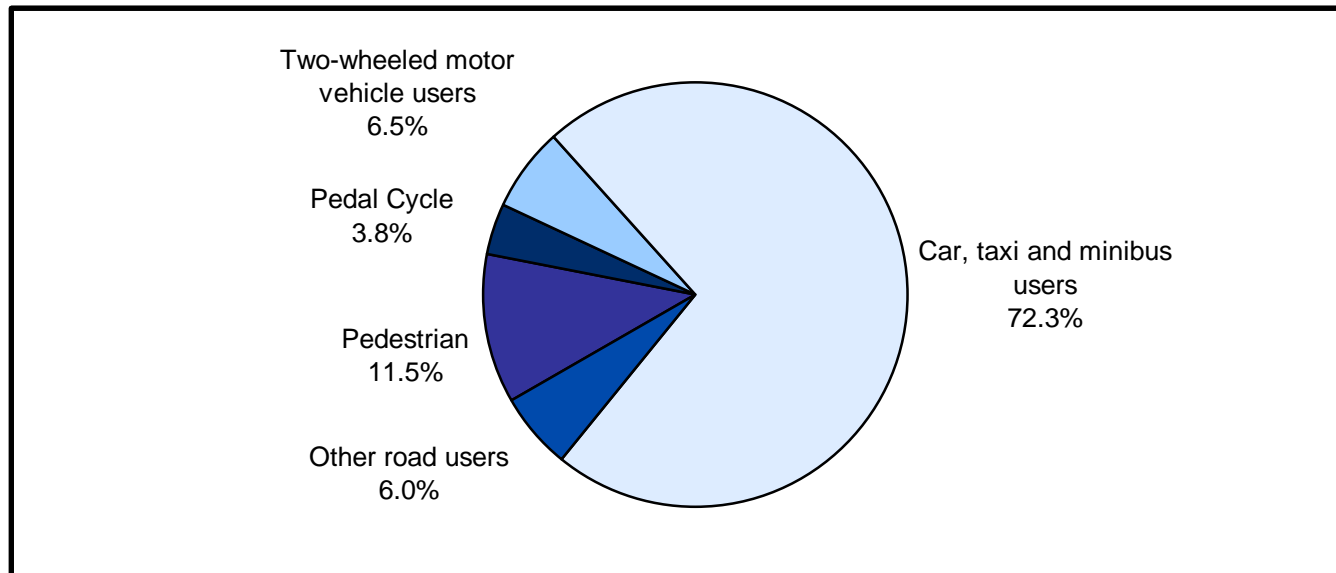
**Next Update:** June 2010 (provisional)



Further points to note are:

- Comparing 2008 to the 1994-98 average there were reductions in the number of casualties for all types of road user (Table 3).
- Total child road casualties decreased by 51 per cent compared to the 1994-98 average (Table 4).

**Figure 2: Casualties by type of road user, 2008**



**Table 1: Casualties by severity**

*Number and percentage*

	Killed	Seriously injured	Slightly injured	All casualties
1994-98 average	213	1,795	12,848	14,856
1999	192	1,679	12,479	14,350
2000	168	1,655	12,317	14,140
2001	187	1,538	12,070	13,795
2002	147	1,485	12,704	14,336
2003	173	1,482	12,381	14,036
2004	201	1,336	12,150	13,687
2005	180	1,146	11,407	12,733
2006	162	1,210	11,320	12,692
2007	161	1,238	10,870	12,269
2008	142	1,253	9,790	11,185
Percentage change 2008 over 1994-98 average	-33	-30	-24	-25

**Table 2: Progress towards casualty reduction targets for 2010***Number and percentage*

	Killed or seriously injured casualties (a)	Killed or seriously injured children (b)	Slight casualty rate per 100 million vehicle km (c)
1994-98 average	2,008	289	54
1999	1,871	244	50
2000	1,823	225	50
2001	1,725	205	48
2002	1,632	191	48
2003	1,655	192	47
2004	1,537	170	44
2005	1,326	135	42
2006	1,372	144	41
2007	1,399	148	39
2008	1,395	115	34 (d)
Percentage change 2008 on 1994-98 average	-30.5	-60.2	-36.7 (d)

(a) Target is a 40 per cent reduction by 2010 compared to 1994-98 average

(b) Target is a 50 per cent reduction by 2010 compared to 1994-98 average

(c) Target is for a 10 per cent reduction by 2010 compared to 1994-98 average

(d) 2008 road traffic data are not yet available. The rate has been estimated based on the 2007 traffic volume.

**Table 3: Casualties by type of road user***Number and percentage*

	Pedestrian	Pedal Cycle	Two-wheeled motor vehicle users (a)	Car, taxi and minibus users (b)	Other road users (c)	Total (d)
1994-98 average	2,040	730	782	10,343	961	14,856
1999	1,761	660	794	10,181	954	14,350
2000	1,772	561	815	10,068	923	14,140
2001	1,679	583	849	9,851	833	13,795
2002	1,649	498	847	10,416	926	14,336
2003	1,588	509	803	10,352	784	14,036
2004	1,531	516	778	10,082	780	13,687
2005	1,410	431	694	9,509	689	12,733
2006	1,324	496	813	9,255	804	12,692
2007	1,290	450	774	9,064	691	12,269
2008	1,283	422	723	8,091	666	11,185
Percentage change 2008 on 1994-98 average	-37.1	-42.2	-7.6	-21.8	-30.7	-24.7

(a) Includes mopeds, motor scooters, motor cycles and combinations.

(b) Includes motor caravans up to and including 1998.

(c) Includes buses, coaches, goods vehicles, invalid vehicles and other vehicles. Also includes motor caravans from 1999.

(d) Includes one casualty of unknown road user type in 2000.

**Table 4: Child road casualties by severity (a)***Number and percentage*

	Killed	Seriously injured	Slightly injured	All severities
1994-98 average	14	275	1,977	2,266
1999	17	227	1,894	2,138
2000	8	217	1,785	2,010
2001	13	192	1,707	1,912
2002	9	182	1,660	1,851
2003	13	179	1,537	1,729
2004	9	161	1,375	1,545
2005	7	128	1,260	1,395
2006	10	134	1,153	1,297
2007	5	143	1,056	1,204
2008	4	111	989	1,104
Percentage change 2008 on 1994-98 average	-71.0	-59.7	-50.0	-51.3

(a) Children aged 0-15 years inclusive.

**Table 5: Casualties by unitary authority and police force area***Number and percentage*

	1994-98 average	2003	2004	2005	2006	2007	2008	Percentage change 2008 on 1994-98 (a)
Isle of Anglesey	365	254	221	198	240	203	164	-55.0
Gwynedd	710	601	570	514	556	534	544	-23.4
Conwy	626	517	513	424	523	460	512	-18.2
Denbighshire	659	524	470	376	441	464	500	-24.1
Flintshire	991	853	841	630	696	663	651	-34.3
Wrexham	717	693	588	542	596	454	469	-34.6
North Wales Police Force	4,068	3,442	3,203	2,684	3,052	2,778	2,840	-30.2
Powys	732	799	824	725	819	771	671	-8.3
Ceredigion	384	435	407	434	378	427	314	-18.3
Pembrokeshire	585	630	641	583	620	625	474	-19.0
Carmarthenshire	919	902	928	894	895	857	810	-11.9
Dyfed-Powys Police Force	2,621	2,766	2,800	2,636	2,712	2,680	2,269	-13.4
Swansea	1,219	1,132	1,128	1,150	1,262	1,074	967	-20.7
Neath Port Talbot	647	578	527	661	645	618	501	-22.5
Bridgend	607	519	575	576	512	478	456	-24.9
Vale of Glamorgan	492	536	492	489	379	382	349	-29.1
Cardiff	1,520	1,635	1,556	1,516	1,390	1,432	1,226	-19.4
Rhondda Cynon Taf	983	1,010	1,033	975	852	1,059	854	-13.1
Merthyr Tydfil	263	314	246	229	230	221	202	-23.3
South Wales Police Force	5,731	5,724	5,557	5,596	5,270	5,264	4,555	-20.5
Caerphilly	632	628	610	507	453	421	474	-25.0
Blaenau Gwent	241	202	241	246	260	222	240	-0.3
Torfaen	312	225	241	201	179	159	138	-55.7
Monmouthshire	525	430	395	344	290	262	212	-59.6
Newport	727	619	640	519	476	483	457	-37.2
Gwent Police Force	2,437	2,104	2,127	1,817	1,658	1,547	1,521	-37.6
Wales	14,856	14,036	13,687	12,733	12,692	12,269	11,185	-24.7

(a) Caution should be exercised when making comparisons between individual unitary authorities; relatively small changes

The following symbols may have been used in this Release.

- negligible (less than half the final digit shown)
- .. not available
- . not applicable
- ~ not yet available
- r revised
- p provisional

### **Key quality information:**

1. The statistics refer to personal injury accidents on public roads reported to the police and forwarded to the Welsh Assembly Government.
2. The figures are the latest available. It is possible that some of the figures shown in this Release may change in future publications if there are late amendments. Similarly, the figures in this Release for earlier years may differ from those previously published.
3. A more detailed analysis of the 2008 road accident figures will be published later in 2009.
4. Figures for deaths refer to people killed immediately or who died within 30 days of the accident (excluding confirmed suicides).
5. A casualty is seriously injured if the injuries sustained require that he / she is detained in hospital as an 'in-patient', or sustains any of the following injuries whether or not detained in hospital: fractures, concussion, internal injuries, crushings, severe cuts and lacerations, severe general shock requiring medical treatment, injuries causing death 30 or more days after the accident. An injured casualty is coded as seriously or slightly injured by the police on the basis of information available within a short time of the accident. Generally this will not include the results of a medical examination, but may include the fact of being detained in hospital, the reasons for which may vary from area to area.
6. A casualty is slightly injured if the injuries sustained are of a minor character such as a sprain, bruise or cut not judged to be severe, or slight shock requiring roadside attention.